



REPLY TO
ATTENTION OF:

DEPARTMENT OF THE ARMY
U.S. ARMY CORPS OF ENGINEERS, MOBILE DISTRICT
600 VESTAVIA PARKWAY, SUITE 203
THE SHELBY BUILDING
VESTAVIA HILLS, ALABAMA 35216

September 12, 2024

PUBLIC NOTICE NO. SAM-2021-00833-JSC

PUBLIC NOTICE CORRECTION

JOINT PUBLIC NOTICE
U.S. ARMY CORPS OF ENGINEERS

STATE OF ALABAMA
DEPARTMENT OF ENVIRONMENTAL MANAGEMENT

**PROPOSED DISCHARGE OF FILL MATERIAL INTO WETLANDS AND STREAMS
ASSOCIATED WITH THE DEVELOPMENT OF A HIGH SCHOOL CAMPUS IN
AUBURN, LEE COUNTY, ALABAMA**

TO WHOM IT MAY CONCERN: This District has received an application for a Department of the Army (DA) permit pursuant to Section 404 of the Clean Water Act (33 U.S.C. 1344). Please communicate this information to interested parties.

APPLICANT: Auburn City Board of Education
Attention: Mr. Dennis Veronese
P.O. Box 3270
Auburn, Alabama 36831
dveronese@auburnschools.org

AGENT: Wildland Services, LLC
Attention: Mr. Eric Clemmons
P.O. Box 469
Auburn, Alabama 36831
eclemmons@wildland-services.com

LOCATION: The project is located in the Lower Tallapoosa 8-digit hydrologic unit code (HUC 03150110), Auburn, Lee County, Alabama. Specifically, the project is located at North Donahue Drive, within Section 13, Township 19 North, Range 25 East. Center coordinates of the project are at latitude 32.6384 North, longitude -85.4990 West.

PROJECT PURPOSE: The basic project purpose is to build a high school campus and infrastructure.

WORK: *This Public Notice (PN) includes corrected impacts description in the text portion of this PN. The Drawing Figure in the original PN posted April 29, 2024, depicted the accurate proposed impacts to wetlands and waters, and is not changed in this corrected PN.* The applicant is requesting authorization to discharge

fill material into 2.49 acres of wetlands (includes wetland conversion of 0.18 ac), and impact 345 linear feet (LF) of perennial stream, and 771 LF of intermittent stream for the purpose of developing a new Auburn High School campus in Auburn, Alabama. The Corps has not made a jurisdictional determination at this time.

AVOIDANCE & MINIMIZATION: According to the agent, three (3) alternative on-site designs were considered, and the preferred plan would impact the least amount of wetlands and streams. Two (2) alternative off-site locations were assessed and would result in more impacts to aquatic resources than the preferred site. Construction best management practices (BMPs) would be utilized to reduce impacts to downstream aquatic resources. The U.S. Army Corps of Engineers (USACE) has not verified the adequacy of the applicant's avoidance and minimization efforts at this time.

COMPENSATORY MITIGATION: The applicant proposes to purchase wetland and Stream credits from an approved mitigation bank.

The applicant will apply for certification from the State of Alabama in accordance with Section 401(a) (1) of the Clean Water Act. Upon completion of the required advertising and public comment review, a determination relative to water quality certification will be made by the Alabama Department of Environmental Management.

This public notice is being distributed to all known interested persons to assist in developing facts on which a decision by the USACE can be based. For accuracy and completeness of the record, all data in support of or in opposition to the proposed work should be submitted in writing setting forth sufficient detail to furnish a clear understanding of the reasons for support or opposition. The decision whether to issue a permit will be based on an evaluation of the probable impact, including cumulative impacts, of the proposed activity on the public interest. That decision will reflect the national concern for both protection and use of important resources. The benefit which reasonably may be expected to accrue from the proposal must be balanced against its reasonably foreseeable detriments. All factors which may be relevant to the proposal will be considered, including the cumulative effects thereof; among those are conservation, economics, aesthetics, general environmental concerns, wetlands, cultural values, fish and wildlife values, flood hazards, flood plain values, land use, navigation, shoreline erosion and accretion, recreation, water supply and conservation, water quality, energy needs, safety, food production, and in general, the needs and welfare of the people.

The USACE is soliciting comments from the public; Federal, State, and local agencies and officials; Indian Tribes; and other interested parties to consider and evaluate the impacts of this proposed activity. Any comments received will be considered by the USACE to determine whether to issue, modify, condition or deny a permit for this proposal. To make this decision, comments are used to assess impacts on endangered species, historic properties, water quality, general environmental effects, and the other public interest factors listed above. Comments are used in the preparation of an

Environmental Assessment and/or an Environmental Impact Statement pursuant to the National Environmental Policy Act. Comments are also used to determine the need for a public hearing and to determine the overall public interest of the proposed activity. Any person may request, in writing, within the comment period specified in this notice, that a public hearing be held to consider this application. Requests for public hearings shall state with particularity, the reasons for holding a public hearing.

Evaluation of the probable impacts involving deposits of dredged or fill material into waters of the United States will include the application of guidelines established by the Administrator of the U.S. Environmental Protection Agency.

HISTORIC PROPERTIES: In accordance with Section 106 of the National Historic Preservation Act and Appendix C of 33 CFR 325, the undertaking defined in this notice is being considered for the potential to affect cultural and historic properties within the permit area. The USACE has not made a determination of effects to historic properties at this time. We are seeking comment from the State Historic Preservation Officer, federally recognized American Indian tribes, local historical societies, museums, universities, the National Park Service, and the general public regarding the existence or the potential for existence of significant cultural and historic properties which may be affected by the work. Further coordination with the State Historic Preservation Officer and/or federally-recognized American Indian tribes will be performed as determined to be appropriate.

ENDANGERED/THREATENED SPECIES: Preliminary review of this application and the U.S. Department of the Interior List of Endangered and Threatened Species indicates the following species have the potential to occur in the project watershed: Tricolored Bat, Whooping Crane, Finelined Pocketbook, Ovate Clubshell, Georgia Rockcress, Alligator Snapping Turtle, and Monarch Butterfly. An effects determination will be made during the evaluation process, at which time the USACE will initiate consultation with the United States Fish and Wildlife Service (USFWS), as appropriate. Copies of this public notice are being sent to the USFWS and other federal and state agencies for review and receipt of any relevant comments regarding potential effects of the proposed project on the listed species.

Correspondence concerning this Public Notice should refer to Public Notice Number **SAM-2021-00833-JSC** and should be directed to the District Engineer, U.S. Army Corps of Engineers Mobile District, Birmingham Field Office, Attention: **Ms. Angela M. Rangel**, 600 Vestavia Parkway, Suite 203, Vestavia Hills, Alabama 35216, with a copy to the Alabama Department of Environmental Management, Field Operations Division, Office of Field Services, Attention: Ms. Fallon Hooks, Post Office Box 301463, Montgomery, Alabama 36130-1463. Comments may also be submitted via e-mail to USACE at **Angela.M.Rangel@usace.army.mil** and to ADEM at **fieldmail@adem.alabama.gov**.

If you have any questions concerning this publication, you may contact the project manager via e-mail at **Angela.M.Rangel@usace.army.mil** or telephone number **(251) 455-6785**. Please refer to the above Public Notice number.

For additional information about our Regulatory Program, please visit our web site at <http://www.sam.usace.army.mil/Missions/Regulatory.aspx>.

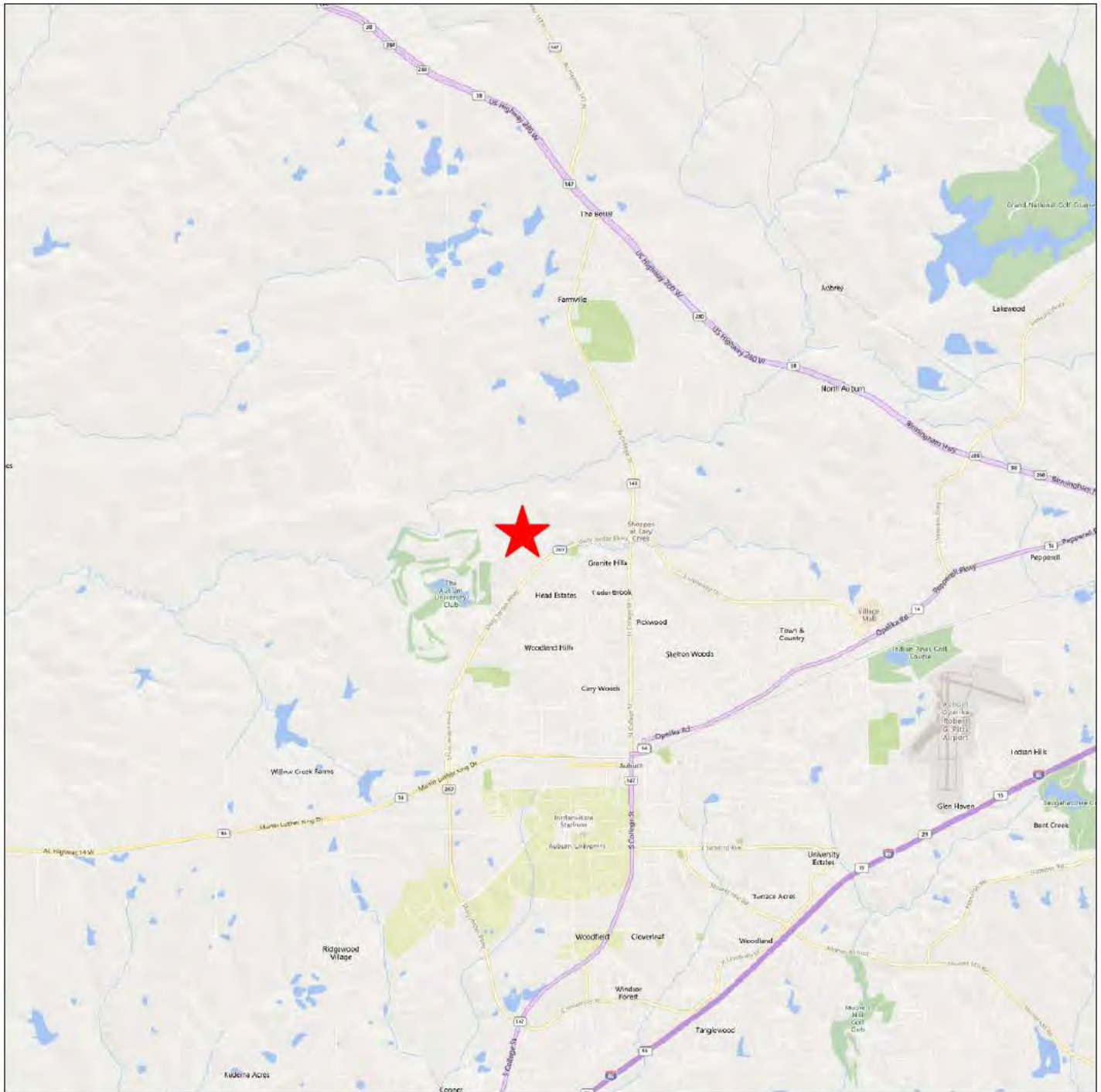
MOBILE DISTRICT
U.S. Army Corps of Engineers

Attachments



Drawing by: Will Neighbors: CPESC, PWS
334-391-2005 / www.wildlandservices.com

AHS ACS
S13 T19N R25E
32.6384, -85.4990
AUBURN, ALABAMA



1/6/2021

Figure 1
Site Location Map

LEGEND

Drawing Symbols

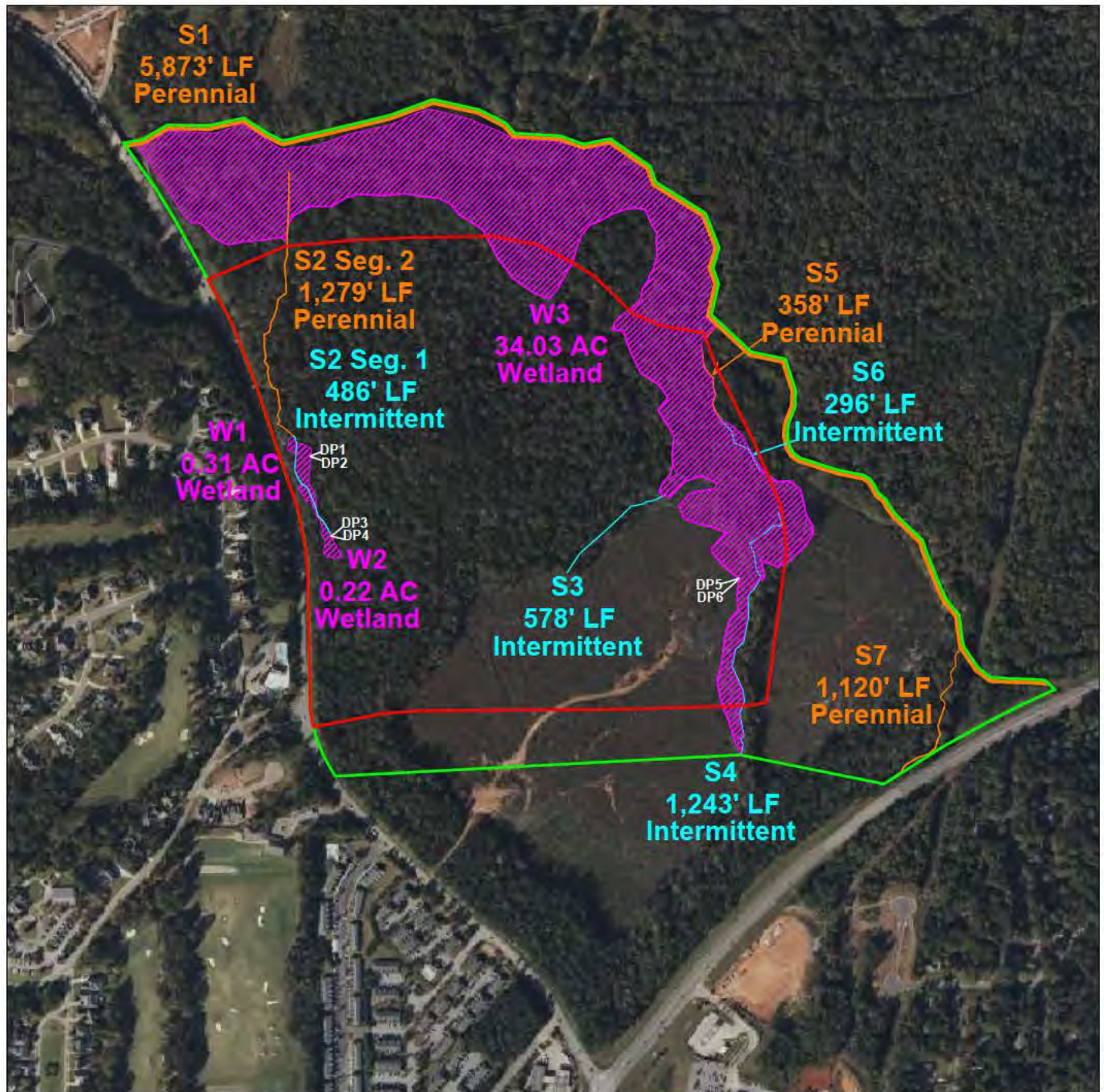
Site Location





Drawing by: Will Neighbors: CPESC, PWS
334-391-2005 / www.wildlandservices.com

AHS ACS
S13 T19N R25E
32.6384, -85.4990
AUBURN, ALABAMA



1/6/2021

0 100 200 300

Figure 2
Aerial with Delineation

LEGEND

Drawing Symbols

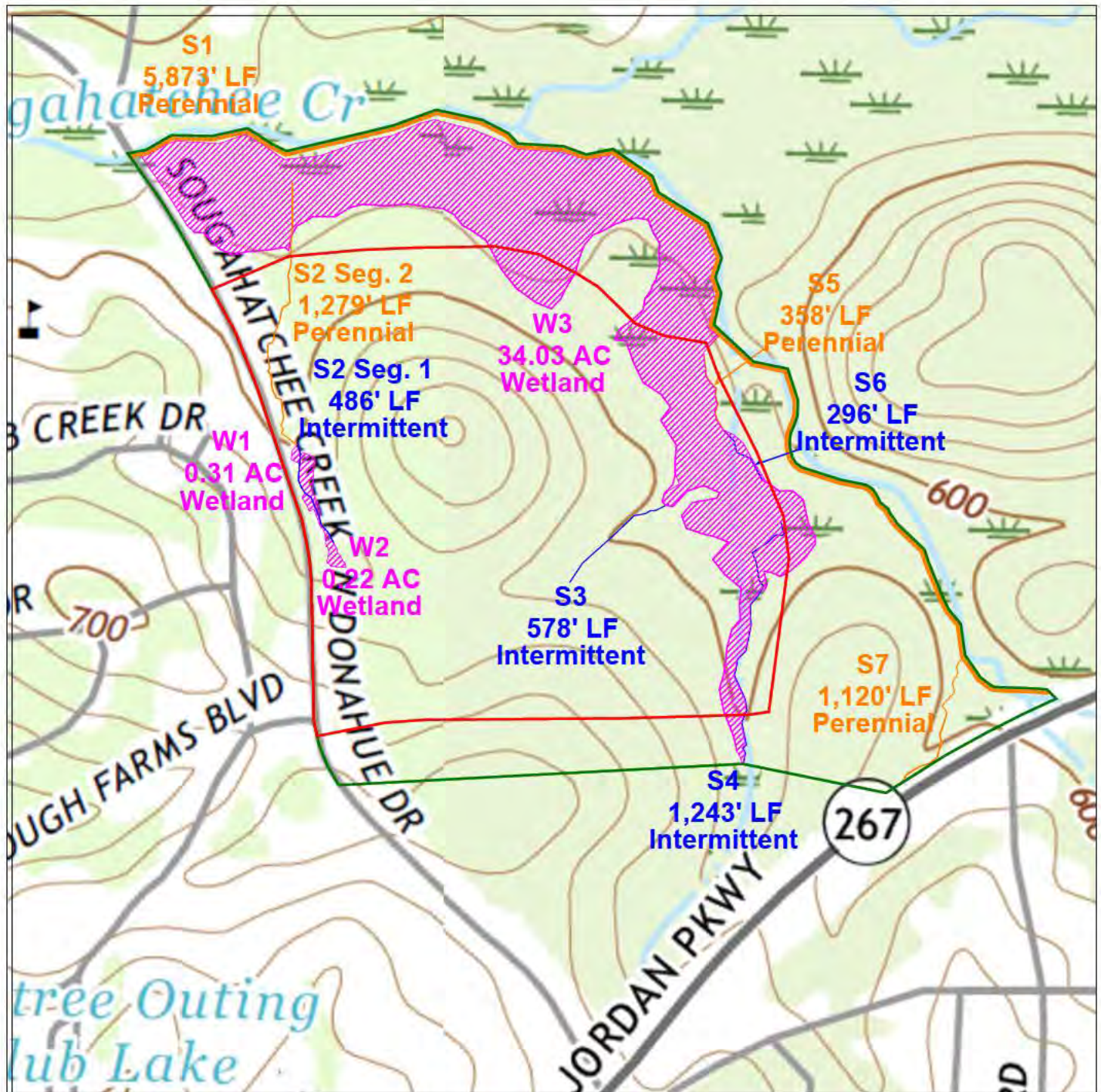
- IP Site Boundary
- Perennial Stream
- Intermittent Stream
- Wetland
- Data Point
- AUC Site Boundary



Drawing by: Will Neighbors, CPESC # 6619
334-391-2005 / www.wildlandservices.com



AHS ACS
S13 T19N R25E
32.6384, -85.4990
AUBURN, ALABAMA



1/6/2021



Figure 3
USGS Topo with Delineation

LEGEND

Drawing Symbols

- IP Site Boundary
- Perennial Stream
- Intermittent Stream
- Wetland
- AJD Site Boundary



Drawing by: Will Neighbors: CPESC, PWS
334-391-2005 / www.wildlandservices.com

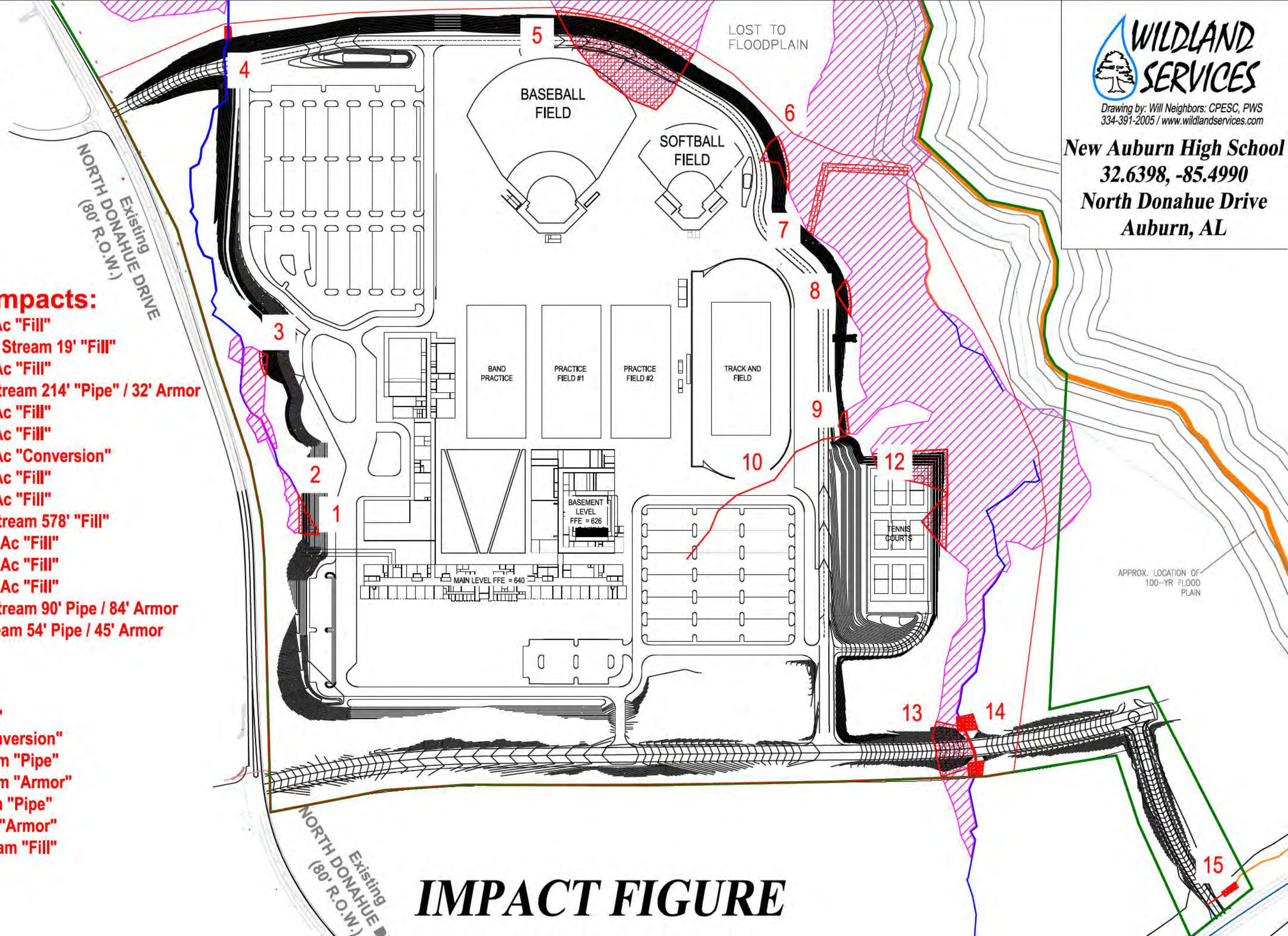
New Auburn High School
32.6398, -85.4990
North Donahue Drive
Auburn, AL

Proposed Impacts:

- 1.) W1-Wetland 0.06 Ac "Fill"
- 2.) S2 S1-Intermittent Stream 19' "Fill"
- 3.) W2-Wetland 0.02 Ac "Fill"
- 4.) S2 S2-Perennial Stream 214' "Pipe" / 32' Armor
- 5.) W3-Wetland 1.16 Ac "Fill"
- 6.) W3-Wetland 0.10 Ac "Fill"
- 7.) W3-Wetland 0.18 Ac "Conversion"
- 8.) W3-Wetland 0.04 Ac "Fill"
- 9.) W3-Wetland 0.03 Ac "Fill"
- 10.) S3-Intermittent Stream 578' "Fill"
- 11.) W3-Wetland 0.12 Ac "Fill"
- 12.) W3-Wetland 0.48 Ac "Fill"
- 13.) W3-Wetland 0.30 Ac "Fill"
- 14.) S4-Intermittent Stream 90' Pipe / 84' Armor
- 15.) S5-Perennial Stream 54' Pipe / 45' Armor

TOTALS:

- 2.31 Ac Wetland "Fill"
0.18 Ac Wetland "Conversion"
90' Intermittent Stream "Pipe"
84' Intermittent Stream "Armor"
268' Perennial Stream "Pipe"
77' Perennial Stream "Armor"
597' Intermittent Stream "Fill"



IMPACT FIGURE